

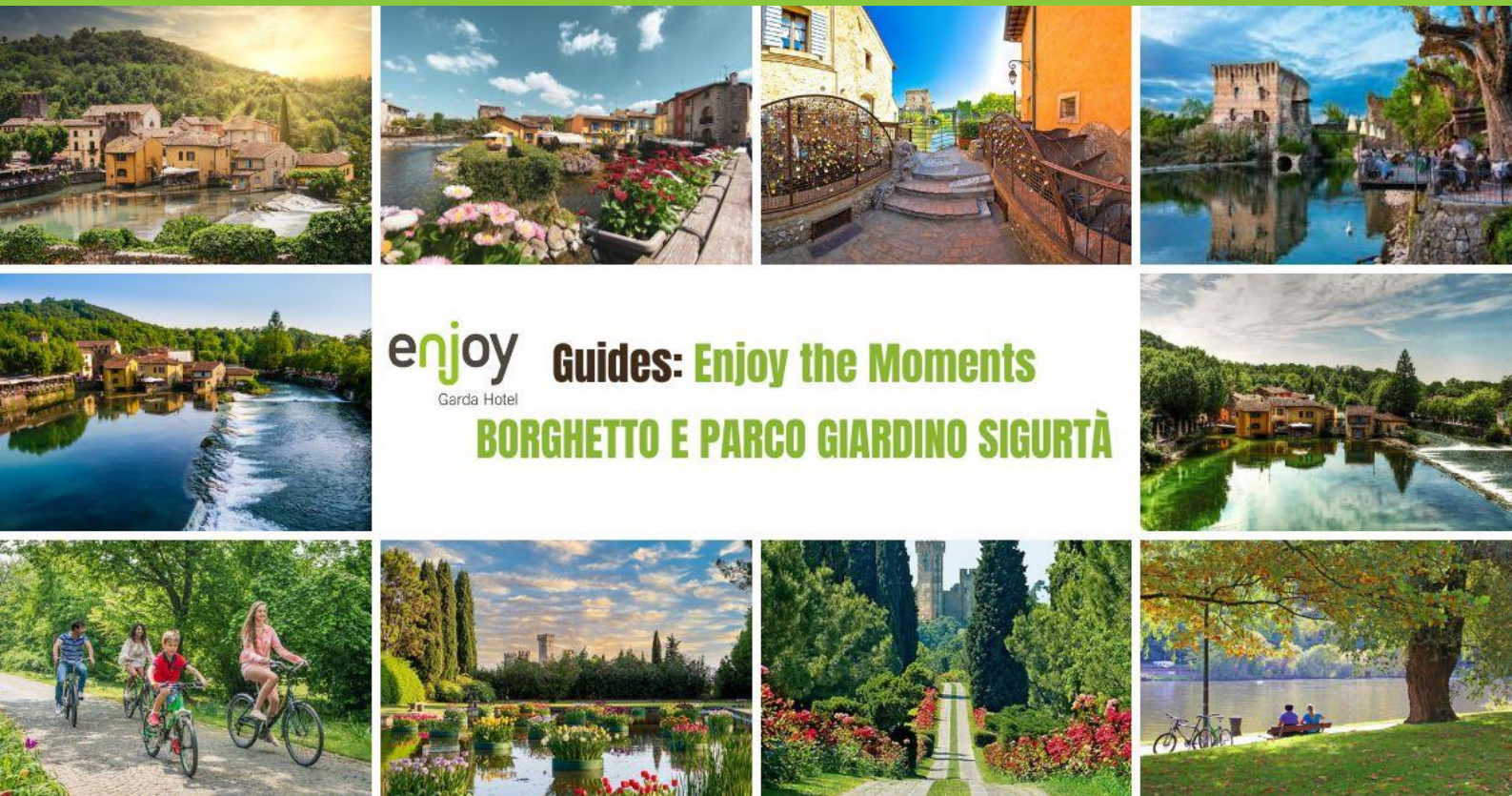
ENJOY GARDA HOTEL

EASY CYCLING ROUTE: BORGHETTO AND SIGURTÀ GARDEN PARK



enjoy
Garda Hotel

GUIDE TO BORGHETTO AND SIGURTÀ GARDEN PARK



enjoy Guides: **Enjoy the Moments**
Garda Hotel
BORGHETTO E PARCO GIARDINO SIGURTÀ

EASY CYCLING ROUTE: BORGHETTO AND SIGURTÀ GARDEN PARK

We would like to offer you some interesting ideas for spending a day on two wheels, riding to Borghetto and the Sigurtà Garden Park, one of the most visited nature gardens in Italy.

Use this guide as an excellent source of useful advice, but always check the official sites for the current conditions of entry and use of services. In particular, check the information for days open, operating hours, prices, free admission and regulations.

Do you want to discover what wonders await you? Hop on your bike and get ready to experience a day where you are in touch with nature!

GUIDE TO BORGHETTO



To ride to Borghetto, use the EuroVelo 7 cycle path, also known as 'The Road of the Sun'. It is a European cycle route that connects the North Cape in Norway with Valletta in Malta, passing through Finland, Sweden, Denmark, Germany, the Czech Republic, Austria and Italy. Our reception desk can provide directions to find the Peschiera entry point to the cycle path, which is not far from the hotel. Once on the cycle path, you will ride about 45 minutes to arrive in Borghetto. The cycle route is about 15 km long and its difficulty is medium-low.

Borghetto is an ancient mill village, included in the list of Italy's Most Beautiful Villages.

The village is cozy and romantic, with its manicured streets, small wooden bridges and flowers that paint it in bright colours. It sits on the bank of the River Mincio and preserves that ancient bond with water, which will accompany you during your visit, as you listen to the lively sound of its small waterfalls and the roar of the wheels of its ancient mills.

GUIDE TO BORGHETTO



It is also possible to visit the inside of the mills: a truly exciting sight if you have never seen one in action.

What will immediately catch your eye is the Visconteo Bridge, built by the Duke of Milan, Gian Galeazzo Visconti, in 1393 to defend his territories. It is about 650 meters long and joins the Scaligero Castle, which sits atop the hill.

The 12th century Torre Tonda is its oldest part, while the rest of the complex dates back to the 14th century.

After admiring these imposing buildings, you can pay a visit to the Church of San Marco Evangelista (1759), a neoclassical reconstruction of the previous Romanesque parish church dating back to the 11th century.

Although unfortunately the Romanesque decorations have been lost, you can still admire several frescoes, including those dating from the 15th century and the Gothic or Baroque period.

GUIDE TO BORGHETTO



Lunch

After all your effort, you may be ready for lunch. You have two options:

- Have lunch in one of Borghetto's many restaurants and sample the speciality of Nodi d'Amore (fresh pasta stuffed with braised meats) and other local products.
- Continue by bike to the nearby Parco Giardino Sigurtà, to enjoy a picnic on the grass or to rest at one of its refreshment points. The park is less than 2 km from Borghetto.

We recommend the first option if you want to be comfortable and are curious about local dishes.

The second option is for you if you prefer to be freer and enjoy a light lunch out in nature.

GUIDE TO BORGHETTO



If you would like to have lunch inside the Sigurtà Garden Park, we have a few tips for you:

- If you decide to bring a packed lunch, you can sit in one of the picnic areas with tables. Alternatively, you can spread a tarp on the grass, wherever you prefer.
- If you decide to have lunch at a refreshment area, there are five in the park, but you are unlikely to find them all open. It is best to ask at the entrance which refreshment stations are available on that day.
- In any case, bear in mind that if you go during busy periods (typically spring and summer weekends) you will have to queue a lot to wait your turn.

GUIDE TO SIGURTA' GARDEN PARK



The Sigurtà Garden Park covers an area of 60 hectares and is open to visitors from approximately March to mid-November. It has won numerous national and international awards and organizes special events at certain times of the year.

Throughout, there are many trees, shrubs and flowers, as well as large expanses of grass.

The best months to visit are in spring, when tulips, irises and roses cover the lawns and avenues.

The summer months, on the other hand, are the time for water lilies, lotus flowers, sunflowers and hydrangeas, but there are also annual flowers that grace the park in every season.

You will also discover many enchanting corners such as the hermitage, the labyrinth, the little castle, the votive grotto, the dog cemetery and the numerous ponds.

It is suitable for everyone, including families with children. Please note that the park is not flat, but there are higher areas that can be reached by stairs, so with a pushchair some sections may be difficult to visit.

GUIDE TO SIGURTA' GARDEN PARK



Buying a Ticket

There are two ways to buy a ticket:

- Directly at the park entrance. On certain days of the year, tickets can only be purchased online. Check the official website for the dates for this year.
- Online from the official site. Please note that the ticket is not refunded in the event of bad weather, so if you want to buy it online, we recommend that you do so close to your trip, to be sure of finding a clear or rain-free day.

Contact

Sigurtà Garden Park

Via Cavour 1 - 37067 Valeggio sul Mincio (Verona)

Tel. + 39 045 6371033

Fax +39 045 6370959

<https://www.sigurta.it/>
info@sigurta.it

GUIDE TO SIGURTA' GARDEN PARK



How to visit

You can visit it in many ways:

- **On foot.** Calculate that a complete visit on foot can take up to 4 hours.
- **By bike.** You can enter with the one you arrived with and at the entrance you will also find a charging point for electric bikes. The cycle route is about 10 km and there are bike racks along the way where you can leave your bike while you continue exploring on foot.
- **By train.** Near the kiosk at the entrance, a little train departs, taking visitors to the most interesting parts of the park. An extra payment is required in addition to the entrance fee.

GUIDE TO SIGURTA' GARDEN PARK



- A golf cart can be hired at the entrance. This is certainly the most convenient means of transport, but also the most expensive. You will need at least two hours to see the park and you must follow the mandatory routes. Rentals vary from hour to hour, and there is a surcharge if you return the cart even a few minutes late.

Before you start your visit, we recommend that you pick up a paper map at the entrance, because the grounds are quite extensive and you'll need a guide to understand where the points of interest are located.

Alternatively, you can download the official app, which contains the map and unseen insights into some 50 areas.

For the younger ones, there is a second app that simulates a virtual treasure hunt among the wonders of this immense garden. If you want to download it, it is called Yubi.

GUIDE TO SIGURTA' GARDEN PARK



Do you have a pet?

Please note that animals are not allowed to enter, as they could disturb those already in the park.

Other useful tips

- Along the way, you will find areas with benches, toilets and water fountains for drinking.
- We recommend going as far as the educational farm, especially if you are in the company of children: there you will find animals such as baby goats, donkeys, sheep and chickens. There are also deer in another fenced area.
- If you can, go on a weekday, because weekends can be very busy and you may encounter queues for the entrance, bar, toilet, etc.
- If you want to save money on the entrance fee, know that the Park offers discounts for those who buy their ticket on certain fixed dates.



Enjoy Garda Hotel

Via Venezia, 26

37019 Peschiera del Garda (Verona)

Telefono: +39 045 7550111 / +39 045 6401050

Email: info@enjoygardahotel.com

Skype: enjoybooking

WhatsApp: 393471969512